

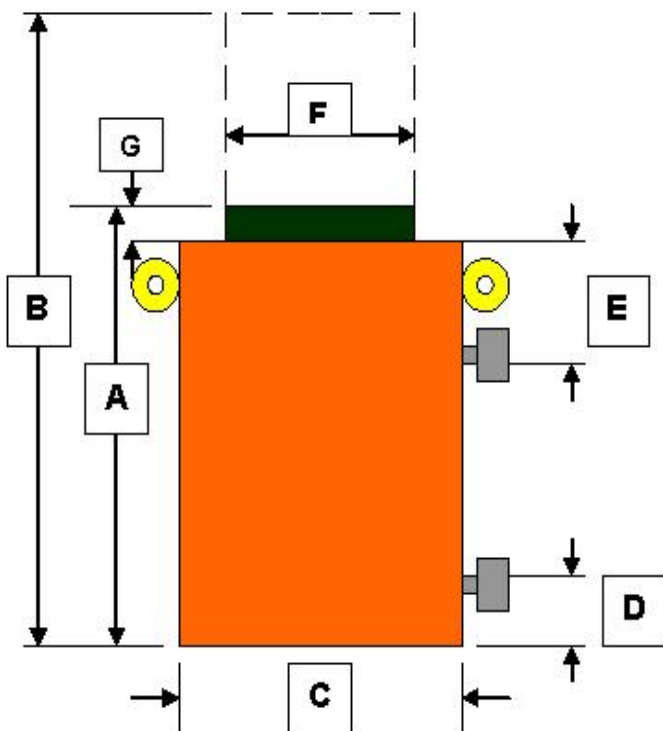


AFKOS INDUSTRIES

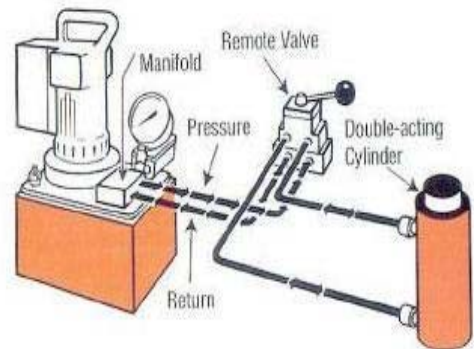
DESIGN AND MANUFACTURING PROJECT ENGINEERS

HIGH TONNAGE CYLINDERS AM-HD 700 Series

- HEAVY DUTY DESIGN FOR HIGH CYCLE LIFE OPERATION
- DOUBLE ACTING – HYDRAULIC RETURN
- 700 BAR OPERATING PRESSURE
- HYDRAULIC RETURN WITH PREMIUM DESIGN AND QUALITY
- MANUFACTURED IN WESTERN AUSTRALIA AND EXPORTED AROUND THE WORLD



Note: All envelope dimension tolerances $\pm 3\text{mm}$



- Cylinders may be “dead ended” without damage.
- Hard chrome plated piston rod provides reduced wear on both piston and gland nut.
- Built in safety relief valve prevents accidental over-pressurization of the retract end of cylinder.
- Each cylinder has two 3/8 NPTF female half couplers.
- In full compliance with Australian standards.
- Afkos standard range swivel caps components are available for all AM range of cylinders.
- Lifting eyes fitted with all cylinders in this range.
- Larger stroke cylinders are manufactured to project requirements.

			A	B	C	D	E	F	G	Load Cap	Bore	Weight
AM HD 700 Series	Cyl Capacity U.S Tons	Stroke	Retracted Height	Extended Height	Outside Diameter	Base to Port	Cyl Top to Port	Piston Rod Dia	Piston Rod Pro-trusion	Optional Load Cap Dia	Bore Dia	Prod. Weight
		(in) (mm)	(mm)	(mm)	(mm)	(mm)	(mm)	(mm)	(mm)	(mm)	(mm)	(kg)
AMHD1002-DA	100	2" 50	248	300	174	38	63	102	15	102	130	40
AMHD1004-DA	100	4" 101	300	401	174	38	63	102	15	102	130	48
AMHD1006-DA	100	6" 152	350	518	174	38	63	102	15	102	130	57
AMHD1008-DA	100	8" 203	401	604	174	38	63	102	15	102	130	65
AMHD10010-DA	100	10" 254	452	706	174	38	63	102	15	102	130	72
AMHD10012-DA	100	12" 305	503	807	174	38	63	102	15	102	130	80
AMHD1502-DA	150	2" 50	275	325	209	51	64	114	20	114	159	63
AMHD1504-DA	150	4" 101	326	427	209	51	64	114	20	114	159	75
AMHD1506-DA	150	6" 152	377	529	209	51	64	114	20	114	159	85
AMHD1508-DA	150	8" 203	427	630	209	51	64	114	20	114	159	98
AMHD15010-DA	150	10" 254	478	732	209	51	64	114	20	114	159	110
AMHD15012-DA	150	12" 305	529	834	209	51	64	114	20	114	159	122
AMHD2002-DA	200	2" 50	305	355	241	63	68	124	8.7	124	184.2	62
AMHD2004-DA	200	4" 101	355	456	241	63	68	124	6	124	184.2	74
AMHD2006-DA	200	6" 152	406	558	241	63	68	124	6	124	184.2	85
AMHD2008-DA	200	8" 203	457	660	241	63	68	124	6	124	184.2	97
AMHD20010-DA	200	10" 254	508	762	241	63	68	124	6	124	184.2	109
AMHD20012-DA	200	12" 305	559	864	241	63	68	124	6	124	184.2	121
AMHD2502-DA	250	2" 50	238	289	271	50	65	159	10	N.A	215.9	102
AMHD2504-DA	250	4" 101	272	375	271	50	65	159	10	N.A	215.9	127
AMHD2506-DA	250	6" 152	342	494	271	50	65	159	10	N.A	215.9	148
AMHD2508-DA	250	8" 203	388	591	271	50	65	159	10	N.A	215.9	169
AMHD25010-DA	250	10" 254	441	695	271	50	65	159	10	N.A	215.9	195
AMHD25012-DA	250	12" 305	492	797	271	50	65	159	10	N.A	215.9	217
AMHD3002-DA	300	2" 50	336	386	273	86	86	159	29	N.A	222	108
AMHD3004-DA	300	4" 101	387	488	273	86	86	159	29	N.A	222	134
AMHD3006-DA	300	6" 152	440	592	273	86	86	159	29	N.A	222	160
AMHD3008-DA	300	8" 203	487	690	273	86	86	159	29	N.A	222	186
AMHD30010-DA	300	10" 254	539	793	273	86	86	159	29	N.A	222	212

			A	B	C	D	E	F	G	Load Cap	Bore	Weight
AM HD 700 Series	Cyl Capacity U.S Tons	Stroke	Retracted Height	Extended Height	Outside Diameter	Base to Port	Cyl Top to Port	Piston Rod Dia	Piston Rod Protrusion	Optional Load Cap Dia	Bore Dia	Prod. Weight
		(in) (mm)	(mm)	(mm)	(mm)	(mm)	(mm)	(mm)	(mm)	(mm)	(mm)	(kg)
AMHD30012-DA	300	12" 305	586	891	273	86	86	159	29	N.A	222	238
AMHD3502-DA	350	2" 50	289	340	299	54	70	197	11	N.A	241	147
AMHD3504-DA	350	4" 101	340	441	299	54	70	197	11	N.A	241	169
AMHD3506-DA	350	6" 152	391	543	299	54	70	197	11	N.A	241	191
AMHD3508-DA	350	8" 203	441	645	299	54	70	197	11	N.A	241	212
AMHD35010-DA	350	10" 254	492	746	299	54	70	197	11	N.A	241	235
AMHD35012-DA	350	12" 305	543	848	299	54	70	197	11	N.A	241	257
AMHD4002-DA	400	2" 50	339	389	321	98	98	184	32	N.A	254	240
AMHD4004-DA	400	4" 101	390	491	321	98	98	184	32	N.A	254	252
AMHD4006-DA	400	6" 152	443	595	321	98	98	184	32	N.A	254	266
AMHD4008-DA	400	8" 203	490	693	321	98	98	184	32	N.A	254	290
AMHD40010-DA	400	10" 254	542	796	321	98	98	184	32	N.A	254	315
AMHD40012-DA	400	12" 254	594	796	321	98	98	184	32	N.A	254	390
AMHD4502-DA	450	2" 50	350	401	336	106	108	222	32	N.A	273	270
AMHD4504-DA	450	4" 101	401	504	336	106	108	222	32	N.A	273	312
AMHD4506-DA	450	6" 152	454	605	336	106	108	222	32	N.A	273	354
AMHD4508-DA	450	8" 203	501	704	336	106	108	222	32	N.A	273	396
AMHD45010-DA	450	10" 254	553	807	336	106	108	222	32	N.A	273	438
AMHD45012-DA	450	12" 305	604	909	336	106	108	222	32	N.A	273	480
AMHD5102-DA	510	2" 50	481	633	405	140	165	229	35	N.A	305	302
AMHD5104-DA	510	4" 101	532	684	405	140	165	229	35	N.A	305	340
AMHD5106-DA	510	6" 152	583	735	405	140	165	229	35	N.A	305	375
AMHD5108-DA	510	8" 203	634	684	405	140	165	229	35	N.A	305	411
AMHD51010-DA	510	10" 254	685	735	405	140	165	229	35	N.A	305	451
AMHD51012-DA	510	12" 305	736	786	405	140	165	229	35	N.A	305	491
AMHD8002-DA	800	2" 50	650	751	508	188	200	318	40	N.A	370	905
AMHD8004-DA	800	4" 101	701	802	508	188	200	318	40	N.A	370	975
AMHD8006-DA	800	6" 152	752	853	508	188	200	318	40	N.A	370	1045

			A	B	C	D	E	F	G	Load Cap	Bore	Weight
AM HD 700 Series	Cyl Capacity U.S Tons	Stroke	Retracted Height	Extended Height	Outside Diameter	Base to Port	Cyl Top to Port	Piston Rod Dia	Piston Rod Protrusion	Optional Load Cap Dia	Bore Dia	Prod. Weight
		(in) (mm)	(mm)	(mm)	(mm)	(mm)	(mm)	(mm)	(mm)	(mm)	(mm)	(kg)
AMHD8008-DA	800	8" 203	803	905	508	188	200	318	40	N.A	370	1116
AMHD80010-DA	800	10" 254	854	956	508	188	200	318	40	N.A	370	1257
AMHD80012-DA	800	12" 305	905	1008	508	188	200	318	40	N.A	370	1395

Manufactured and sold by Afkos Industries in Western Australia

Tel: +61 8 9345 4333 Fax: +61 8 9345 4167

Email: afkos@q-net.net.au Web: www.afkos.com.au

Exporting to: Africa, South America, Europe, Asia & throughout Australia