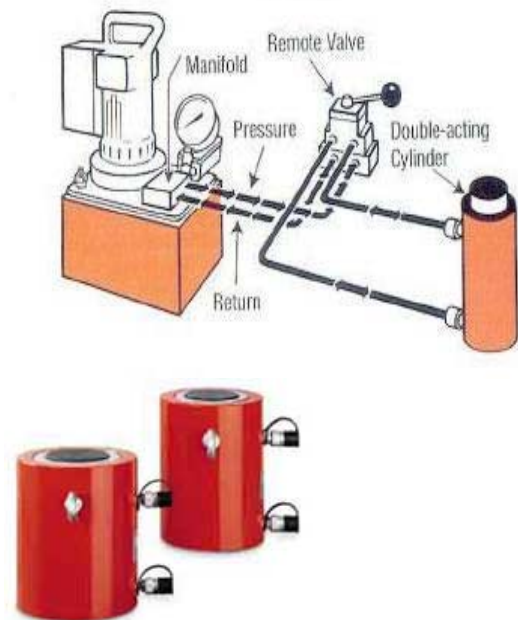
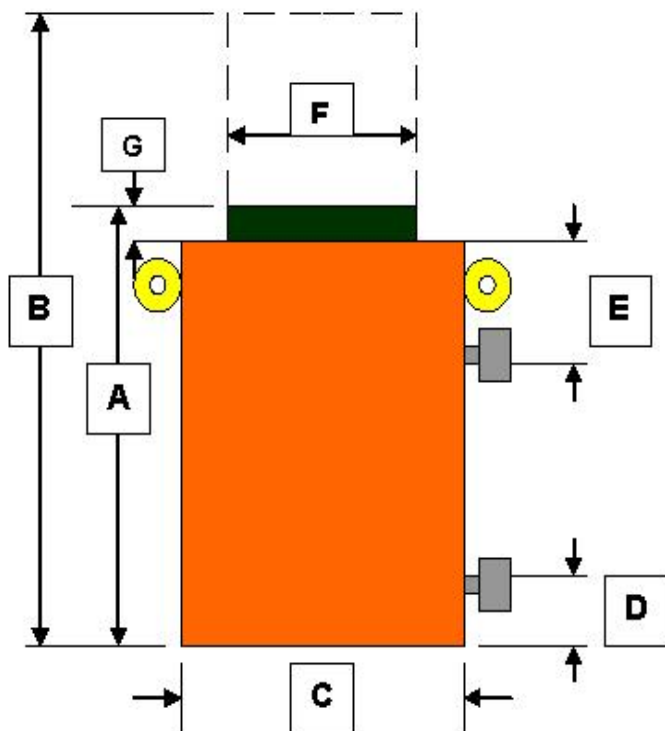




**AFKOS** INDUSTRIES  
DESIGN AND MANUFACTURING PROJECT ENGINEERS

## HIGH TONNAGE CYLINDERS AM-LD 700 Series

- HIGH TONNAGE, LOW CYCLE, ECONOMY CYLINDERS
- DOUBLE ACTING – HYDRAULIC RETURN
- 700 BAR OPERATING PRESSURE
- HYDRAULIC RETURN WITH PREMIUM DESIGN AND QUALITY.
- MANUFACTURED IN WESTERN AUSTRALIA AND EXPORTED AROUND THE WORLD.



Note: All envelope dimension tolerances  $\pm 3\text{mm}$

- Cylinders may be “dead ended” without damage.
- Hard chrome plated piston rod provides reduced wear on both piston and gland nut.
- Built in safety relief valve prevents accidental over-pressurization of the retract end of cylinder.
- Each cylinder has two 3/8 NPTF female half couplers.
- In full compliance with Australian standards.
- Afkos standard range swivel caps components are available for all AM range of cylinders.
- Lifting eyes fitted with all cylinders in this range.
- Larger stroke cylinders are manufactured to project requirements.

			A	B	C	D	E	F	G	Load Cap	Bore	Weight
AM LD 700 Series	Cyl Capacity U.S. Tons	Stroke	Retracted Height	Extended Height	Outside Diameter	Base to Port	Cyl Top to Port	Piston Rod Dia	Piston Rod Protrusion	Optional Load Cap Dia	Bore Dia	Prod. Weight
		(in) (mm)	(mm)	(mm)	(mm)	(mm)	(mm)	(mm)	(mm)	(mm)	(mm)	(kg)
AMD1002-DA	100	2" 50	169	220	165	25	56	95	7	95	130	23
AMLD1004-DA	100	4" 101	220	321	165	25	56	95	7	95	130	31
AMLD1006-DA	100	6" 152	270	423	165	25	56	95	7	95	130	37
AMLD1008-DA	100	8" 203	321	524	165	25	56	95	7	95	130	43
AMLD10010-DA	100	10" 254	372	626	165	25	56	95	7	95	130	49
AMLD10012-DA	100	12" 305	423	727	165	25	56	95	7	95	130	55
AMLD1502-DA	150	2" 50	190	240	205	32	57	114	8	114	159	43
AMLD1504-DA	150	4" 101	240	341	205	32	57	114	8	114	159	53
AMLD1506-DA	150	6" 152	290	443	205	32	57	114	8	114	159	62
AMLD1508-DA	150	8" 203	341	545	205	32	57	114	8	114	159	71
AMLD15010-DA	150	10" 254	392	646	205	32	57	114	8	114	159	80
AMLD15012-DA	150	12" 305	443	748	205	32	57	114	8	114	159	90
AMLD2002-DA	200	2" 50	207	258	241	41	59	133	9	133	184	62
AMLD2004-DA	200	4" 101	257	360	241	41	59	133	9	133	184	74
AMLD2006-DA	200	6" 152	308	461	241	41	59	133	9	133	184	85
AMLD2008-DA	200	8" 203	359	562	241	41	59	133	9	133	184	97
AMLD20010-DA	200	10" 254	410	664	241	41	59	133	9	133	184	109
AMLD20012-DA	200	12" 305	461	765	241	41	59	133	9	133	184	121
AMLD2502-DA	250	2" 50	230	281	269	48	75	159	15	N.A	216	98
AMLD2504-DA	250	4" 101	264	386	269	48	75	159	15	N.A	216	121
AMLD2506-DA	250	6" 152	334	484	269	48	75	159	15	N.A	216	143
AMLD2508-DA	250	8" 203	380	583	269	48	75	159	15	N.A	216	166
AMLD25010-DA	250	10" 254	433	687	269	48	75	159	15	N.A	216	189
AMLD25012-DA	250	12" 305	484	789	269	48	75	159	15	N.A	216	212
AMLD3002-DA	300	2" 50	280	331	273	86	86	159	28	N.A	222	108
AMLD3004-DA	300	4" 101	331	433	273	86	86	159	28	N.A	222	134
AMLD3006-DA	300	6" 152	384	435	273	86	86	159	28	N.A	222	160
AMLD3008-DA	300	8" 203	431	634	273	86	86	159	28	N.A	222	186
AMLD30010-DA	300	10" 254	483	737	273	86	86	159	28	N.A	222	212

			A	B	C	D	E	F	G	Load Cap	Bore	Weight
AM LD 700 Series	Cyl Capacity U.S Tons	Stroke	Retracted Height	Extended Height	Outside Diameter	Base to Port	Cyl Top to Port	Piston Rod Dia	Piston Rod Protrusion	Optional Load Cap Dia	Bore Dia	Prod. Weight
		(in) (mm)	(mm)	(mm)	(mm)	(mm)	(mm)	(mm)	(mm)	(mm)	(mm)	(kg)
AMLD30012-DA	300	12" 305	530	835	273	86	86	159	28	N.A	222	238
AMLD3504-DA	350	4" 101	340	441	299	54	70	197	11	N.A	241	169
AMLD3506-DA	350	6" 152	390	543	299	54	70	197	11	N.A	241	191
AMLD3508-DA	350	8" 203	441	644	299	54	70	197	11	N.A	241	212
AMLD35010-DA	350	10" 254	492	746	299	54	70	197	11	N.A	241	235
AMLD35012-DA	350	12" 305	543	848	299	54	70	197	11	N.A	241	257
AMLD4002-DA	400	2" 50	300	351	321	98	98	184	32	N.A	254	240
AMLD4004-DA	400	4" 101	351	454	321	98	98	184	32	N.A	254	252
AMLD4006-DA	400	6" 152	404	554	321	98	98	184	32	N.A	254	265.6
AMLD4008-DA	400	8" 203	451	601	321	98	98	184	32	N.A	254	290
AMLD40010-DA	400	10" 254	503	757	321	98	98	184	32	N.A	254	315
AMLD40012-DA	400	12" 305	554	859	321	98	98	184	32	N.A	254	349.6
AMLD4502-DA	450	2" 50	350	401	336	106	108	222	32	N.A	273	270
AMLD4504-DA	450	4" 101	401	504	336	106	108	222	32	N.A	273	312
AMLD4506-DA	450	6" 152	454	605	336	106	108	222	32	N.A	273	354
AMLD4508-DA	450	8" 203	501	704	336	106	108	222	32	N.A	273	396
AMLD45010-DA	450	10" 254	553	807	336	106	108	222	32	N.A	273	438
AMLD45012-DA	450	12" 305	604	909	336	106	108	222	32	N.A	273	480
AMLD5102-DA	510	2" 50	481	633	405	140	165	228.5	35	N.A	305	302
AMLD5104-DA	510	4" 101	532	684	405	140	165	228.5	35	N.A	305	340
AMLD5106-DA	510	6" 152	583	735	405	140	165	228.5	35	N.A	305	375
AMLD5108-DA	510	8" 203	634	684	405	140	165	228.5	35	N.A	305	411
AMLD51010-DA	510	10" 254	685	735	405	140	165	228.5	35	N.A	305	451
AMLD51012-DA	510	12" 305	736	786	405	140	165	228.5	35	N.A	305	491

Manufactured and sold by Afkos Industries in Western Australia

Tel: +61 8 9345 4333 Fax: +61 8 9345 4167

Email: afkos@q-net.net.au Web: www.afkos.com.au

Exporting to: Africa, South America, Europe, Asia & throughout Australia